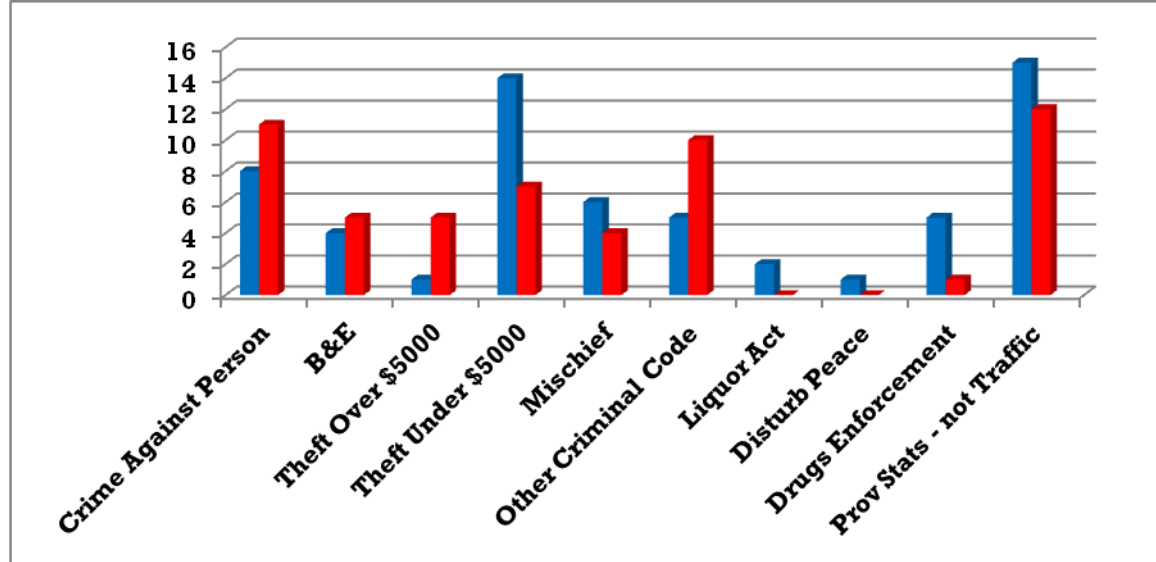


OLDS RCMP DETACHMENT RURAL

SECTION I: DETAILED CRIME REPORT: JAN-MAR 11/12

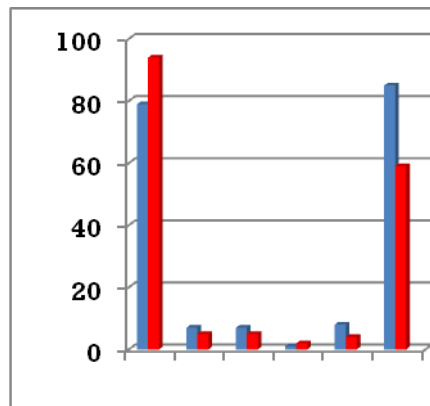
Threats, Harassment, Assaults	8/11
B & E	4/5
Theft Over \$5000	1/5
Theft Under \$5000	14/7
Mischief	6/4
Other Criminal Code	5/10
Liquor Act	2/0
Disturb Peace	1/0
Drug Offences	5/1
Prov Stats - not Traffic	15/12



2011 / 2012

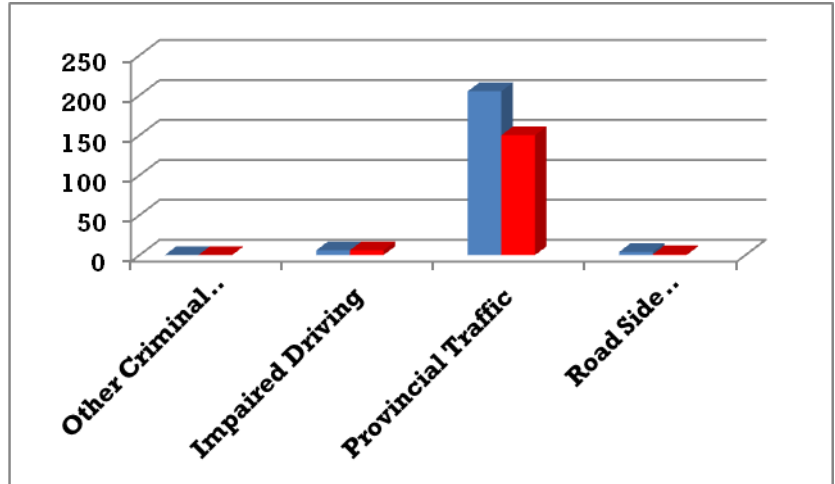
SERVICE SUMMARY

Criminal Record Checks	79/94
Suspicious Persons, Vehicles	7/5
False Alarms	7/5
Lost and Found	1/2
False 911 Calls	8/4
Front Counter Files	85/59



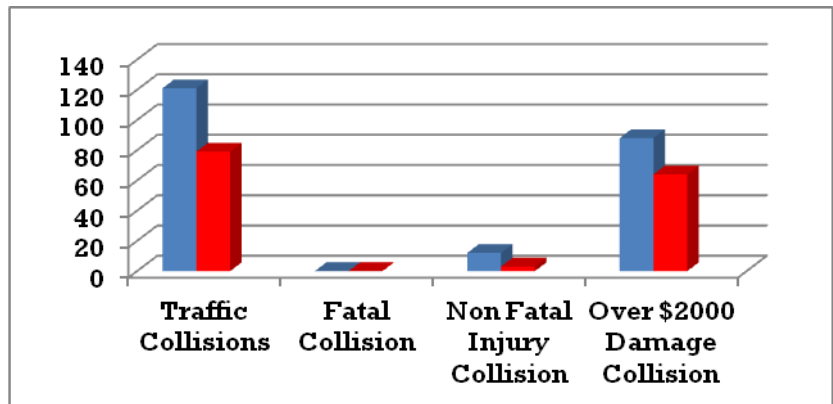
SECTION II: DETAILED TRAFFIC REPORT –JAN-MAR 11/12

Other Criminal Code Traffic	0/0
Impaired Driving	6/6
Provincial Traffic	205/150
Road Side Suspensions	4/1



SUMMARY DETAILED TRAFFIC

Traffic Collisions	121/79
Fatal Collisions	0/0
Non Fatal Injury Collision	12/3
Over \$2000 Damage Collision	88/64



Narrative Report

1. This quarter reflects a significant reduction in collision events. This could well be attributed to the mild winter and good driving conditions. Highway 2 has not consumed the manpower over this winter that is normally associated to major snow related events.
2. Olds Detachment cells have been fixed and heat is now available.
3. Traffic related stops and Provincial tickets are up. This is due to the slower Criminal Code events and 2 members returning from Paternity leave.
4. Cst. MacCallum has departed and Cst. Milbrandt will be arriving in about a week. Overall we are operating 1 member short currently and with 1 member on light duties.
5. We have created some learning opportunities and focused some resources on Intelligence collection. The result has been a large increase in drug related investigations and charges.
6. We need input on Annual Performance Plan targets. This is needed by April 1, 2012 so we can draft plans for the upcoming year.
7. S/Sgt. Morton will be departing Olds in May for Ottawa and then on to Afghanistan in June for 1 year. What happens after that is unknown. Cpls Byrt and Peden will look after the office until his replacement arrives.